



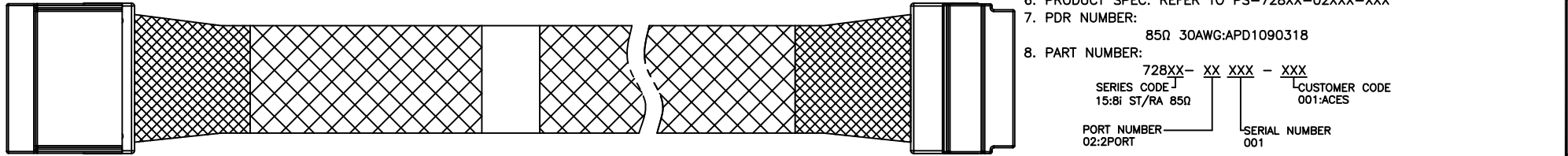
NOTES:

1. ALL CABLE 100% OPEN, SHORT, MISS WIRE & TRANSIENT FAULT TEST.
2. CONDUCTIVE RESISTANCE: 2Ω MAX.
3. INSULATION RESISTANCE: 10M Ω MIN WITH 200Vac AT 10ms.
4. HIGH FREQUENCY TEST MUST COMPLY WITH SAS 4.0 REQUIREMENT.
CONNECTOR IMPEDANCE: 85Ω ±15Ω
CABLE IMPEDANCE: 85Ω ±10Ω
5. ALL MATERIAL AND PROCESS MUST MEET THE REQUIREMENT OF RoHS2.0
6. PRODUCT SPEC. REFER TO PS-728XX-02XXX-XXX
7. PDR NUMBER:
85Ω 30AWG:APD1090318

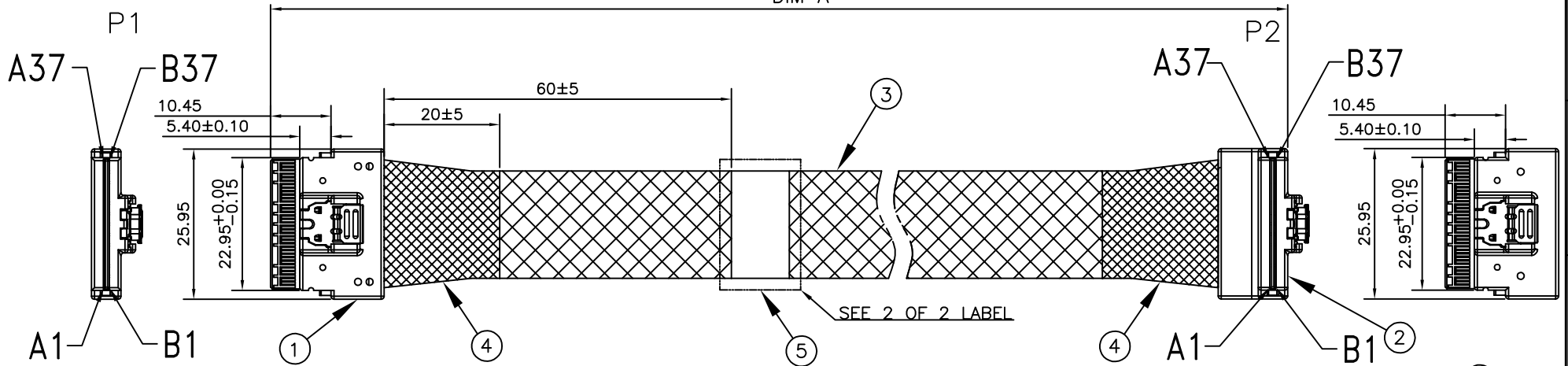
8. PART NUMBER:

72BXX- XX XXX - XXX
 SERIES CODE | CUSTOMER CODE
 15:8I ST/RA 85Ω | 001:ACES

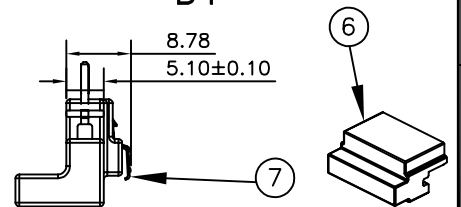
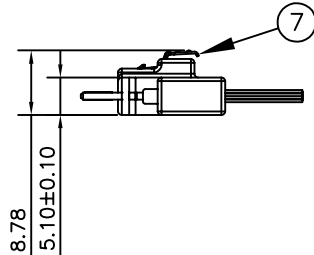
PORT NUMBER: 02:2PORT | SERIAL NUMBER: 001



DIM A



SEE 2 OF 2 LABEL



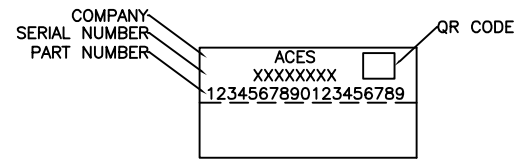
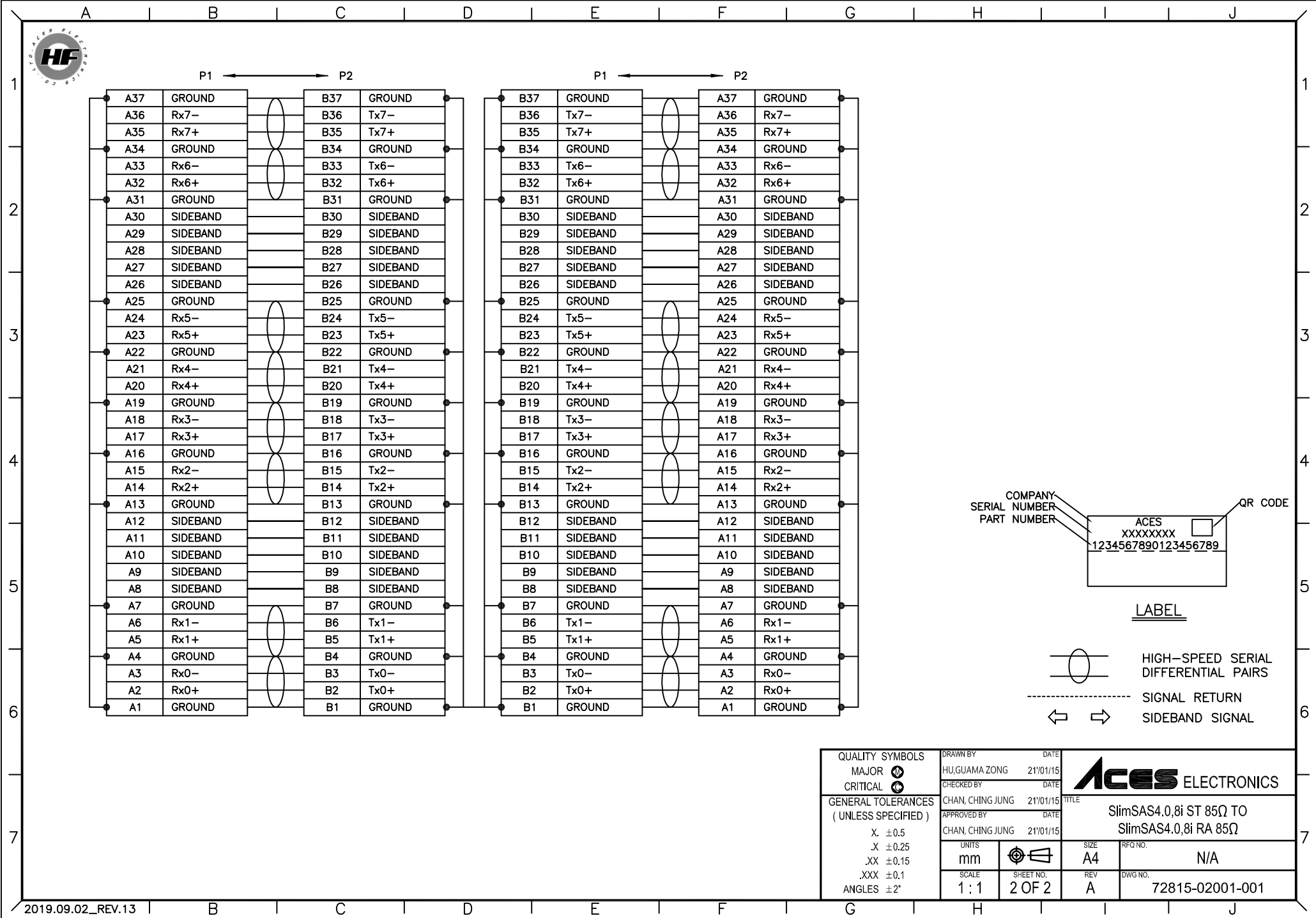
ITEM	DESCRIPTION	Q'TY	UNIT
	SLIMLINE 8I STRAIGHT 85Ω & SLIMLINE 8I RIGHT ANGLE 85Ω		
1	SLIMLINE 8I STRAIGHT 85Ω.	1	PCS
2	SLIMLINE 8I RIGHT ANGLE 85Ω.	1	PCS
3	EXPANDO TUBE.	A/R	MM
4	ACETATE TAPE COLOR: BLACK.	A/R	MM
5	LABEL.	A/R	MM
6	DUST COVER, PE, COLOR: WHITE.	2	PCS
7	LATCH.	2	PCS

QUALITY SYMBOLS	
MAJOR	⊙
CRITICAL	⊗
GENERAL TOLERANCES (UNLESS SPECIFIED)	
X	±0.5
.X	±0.25
.XX	±0.15
.XXX	±0.1
ANGLES ±2°	

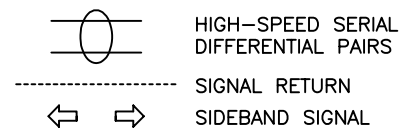
DRAWN BY		DATE	
HU, GUAMA ZONG		21/01/15	
CHECKED BY		DATE	
CHAN, CHING JUNG		21/01/15	
APPROVED BY		DATE	
CHAN, CHING JUNG		21/01/15	
UNITS	mm	SIZE	A4
SCALE	1:1	SHEET NO.	1 OF 2
		REV	A

ACES ELECTRONICS	
TITLE: SlimSAS4.0,8I ST 85Ω TO SlimSAS4.0,8I RA 85Ω	
REFQ NO.	N/A
DWG NO.	72815-02001-001

72815-02001-001	PART NUMBER
1000±15	DIM A



LABEL



QUALITY SYMBOLS MAJOR Ⓢ CRITICAL Ⓢ	DRAWN BY HU, GUAMA ZONG	DATE 21/01/15	
	CHECKED BY CHAN, CHING JUNG	DATE 21/01/15	
GENERAL TOLERANCES (UNLESS SPECIFIED) X. ±0.5 .X ±0.25 .XX ±0.15 .XXX ±0.1 ANGLES ±2°	APPROVED BY CHAN, CHING JUNG	DATE 21/01/15	RFG NO. N/A
	UNITS mm		SIZE A4
	SCALE 1 : 1	SHEET NO. 2 OF 2	REV A
			DWG NO. 72815-02001-001